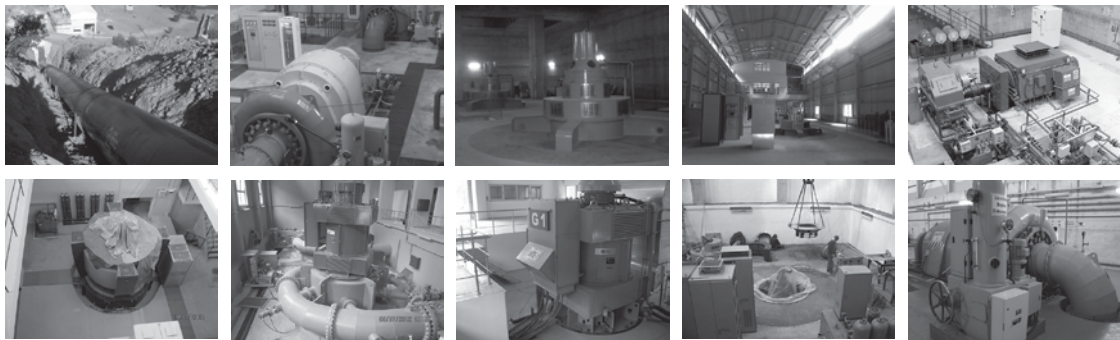




ELECTRIC ELECTROMECHANICAL

prosem



Electric ve Electromechanical Equipments

Concept Design

- Turbine Selection and Sizing
- Inlet Valve Selection and Sizing
- Generator Selection and Sizing
- Excitation System Selection and Sizing
- Auxiliary Systems Selection and Sizing
- Transformer, Cubicles and Other Equipment
- Powerhouse Equipment Selection

Final and Application Design

- MV, LV and DC Single Line Diagrams
- Grounding
- Environmental Lighting
- Lighting, Receptacle Installations
- Fire, Gas Alarm
- Closed Circuit Television
- Cathodic Protection

Technical Specifications

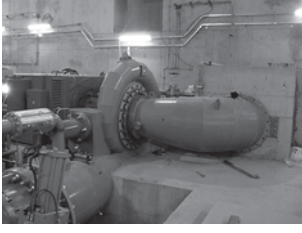
Tender Documents

Tender Evaluation

Contract Review

Site Acceptance Services





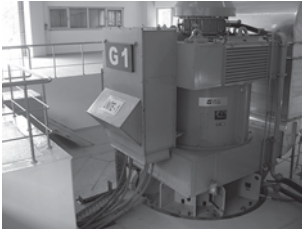
Mavi HEPP
2x5,800 MWm
2x5,695 MWe



Güneşli HEPP
1x12,600 MWm
1x12,380 MWe



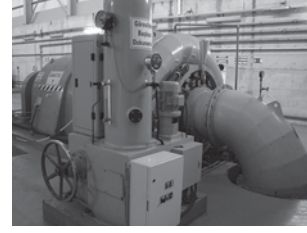
Telli I-II HEPP
2x4,550 MWm
2x4,360 MWe



Vizara HEPP
2x4,426 MWm
2x4,288 MWe



Nazar HEPP
2x15,400 MWm
2x15,120 MWe



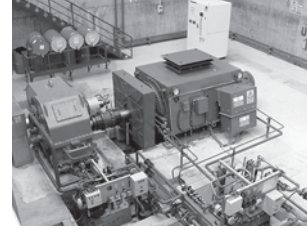
Kale HEPP
3x3,250 MWm
3x3,190 MWe



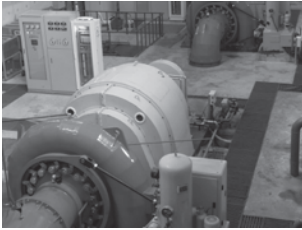
Akdere HEPP
2x3,065 MWm, 2x2,975 MWe
1x1,550 MWm, 1x1,530 MWe



Büyükbahçe HEPP
2x6,050 MWm
2x5,850 MWe



Bağbaşı HEPP
2x7,000 MWm
2x6,800 MWe



Kaletepe HEPP
2x5,400 MWm
2x5,355 MWe



To get detailed information
you can visit our website

www.prosem.biz



References

Recent Electric and Electromechanical Equipment Projects

PROJECT	TYPE	CAPACITYI (MWm)	FLOW (m3/s)	DIAMETER (m)
Mavi HEPP	Francis	11,600	7,00	183,11
Güneşli II HEPP	Kaplan	12,600	31,00	45,47
Telli I-II HEPP	Pelton	9,1000	5,50	193,58
Vizara HEPP	Pelton	8,852	3,90	257,08
Nazar HEPP	Francis	30,800	41,00	83,20
Kale HEPP	Francis	9,750	8,50	127,13
Akdere HEPP	Francis	7,680	6,60	128,30
Büyükbahçe HEPP	Francis	12,100	6,60	204,11
Bağbaşı HEPP	Francis	14,000	8,20	188,97
Kaletepe HEPP	Francis	10,800	5,75	212,12
Azmak-1 HEPP	S Kaplan	12,314	117,00	11,44
Azmak-2 HEPP	S Kaplan	6,602	117,00	6,18
Kırpılık HEPP	S Kaplan	6,498	117,00	6,20
Arpa HEPP	Pelton	32,919	11,50	319,94
Devecikonağı HEPP	Kaplan	23,610	110,00	26,43
Paşa HEPP	Francis	9,042	13,50	74,14
Angutlu I HEPP	Francis	15,000	24,00	69,21
Angutlu II HEPP	Francis	9,250	26,00	38,99
Kayaköprü I HEPP	Francis	32,460	14,00	253,41
Kayaköprü II HEPP	Francis	10,600	16,50	73,86
Köprübaşı HEPP	Francis	15,500	17,50	96,65
Ceviz HEPP	Francis	4,000	4,50	99,23
Demirci HEPP	Francis	13,110	22,71	62,96
Köprüyanı HEPP	Francis	12,200	8,00	168,23
Yedigöl HEPP	Pelton	22,400	11,00	233,31
Aksu HEPP	Pelton	27,000	11,00	292,32
Manavgat HEPP	Francis	12,800	14,00	100,60
Hemşin I HEPP	Francis	1,300	10,00	14,40
Hemşin III HEPP	Francis	1,820	10,00	20,40
Tüfekçikonağı HEPP	Pelton	5,400	1,90	325,61



rev. 2014A



prosem

This brochure was prepared by Prosem Engineering.